



Pentra-Sil®

(AC) Alkalinity Control Formula Primer

Convergent Concrete Specialty Chemical Concrete Treatments

450 South 1325 West
Orem, Utah 84058
United States of America
Toll-free: 866-375-2280
Office: 801-375-2280
Fax: 801-375-2971
www.convergentconcrete.com



(Patented) Nano Lithium™ (NL)
Concrete Floor Treatments

©2007 Convergent Concrete
Technologies LLC. All Rights Reserved.

PRODUCT DESCRIPTION

Pentra-Sil® (AC) Advanced Lithium Alkalinity Control Formula Primer is specifically designed for use on sweating or efflorescing floors as a pre-treatment for Pentra-Sil. The unique treatment will neutralize substrate surfaces suffering from alkalinity problems. It reduces sweating of the concrete surface, neutralizes surfaces treated with sodium or potassium silicates and reduces vapor drive that carries the alkaline salts to the surface of the concrete.

High pH levels at the surface of concrete can attract moisture as Mother Nature acts to equalize an existing pH imbalance by drawing moisture from the concrete slab towards the surface or from the air above the slab. Reduction of this phenomenon has been seen through the use of Pentra-Sil® AC and Pentra-Sil. It is aggressively worked into the pre-cleaned surface where it is allowed to penetrate deep into the substrate to control surface alkalinity. By impregnating the surface with Pentra-Sil® AC, the permeability of the surface is reduced, which reduces the migration of alkaline salts to the surface. This prevents them from reacting with carbon dioxide to form efflorescence. (For serious problems we recommend a full treatment consisting of C&N, AC, and Pentra-Sil.)

BENEFITS See Table 1. (For visual descriptions of magnified views.)

Reduces sweating of the concrete surface.

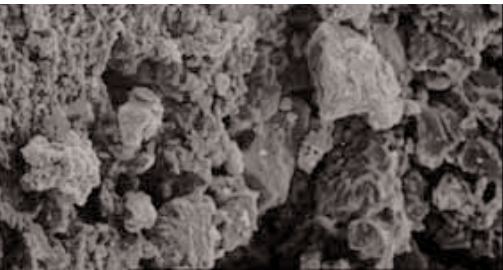
Neutralizes surfaces treated with sodium or potassium silicates

Reduces vapor drive that carries the alkaline salts to the surface of concrete.

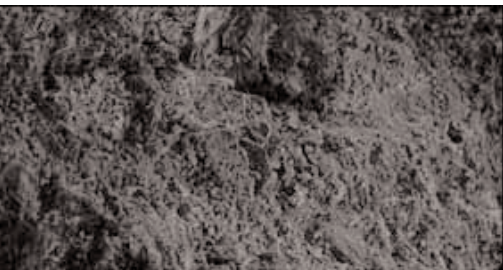
Reduces alkalinity drive.

NOTE: Sweating floors can be the result of various conditions. Not all sweating floors are a result of a pH imbalance. PentraSil® AC may not address other conditions and test patches should be done to confirm PentraSil® AC is effective before treating large areas.

Table 1.



Magnification 200X
Untreated



Magnification 200X
Treated

PACKAGING

5 Gal Plastic Pail	43.45 lbs	19.7 kgs
55 Gal Drum	478 lbs.	217 kgs
Tote (275 Gals)	2390 lbs.	1,084 kgs

USE & TECHNICAL SPECIFICATIONS

COVERAGE / TREATMENT YIELD*

Broom Finished	250-350 ft2 per gallon (1 liter per 6 to 8.5m2)
Steel Troweled	400-550 ft2 per gallon (1 liter per 9.8 to 13.5m2)
Typical Coverage Rates:	250-400 sq. ft. per gallon

*Coverage rate will vary with concrete quality, finish, and environment.

DRYING TIME 1-2 hours

PHYSICAL PROPERTIES

Form	Clear, colorless, aqueous solution
Total Solids	16%
Active Ingredients:	100% of total solids
Specific Gravity:	1.04
pH	11.0
Flash Point:	N/A
V.O.C. Content	less than 50 g/liter
Freeze point	32°F(0°)
Friction coefficient	Does not appreciably affect coefficient*
Depth of Surface Penetration	2-8mm
Shelf Life	1 year in factory sealed container

*Must employ all recognized slip and fall prevention techniques

COMPLIANCES

Safe for use in Food & Drug Processing Industries

LIMITATIONS

Application by spray, roller or brush to new or old concrete

(Always test each concrete surface for suitability and desired results. Let surface dry before inspection and approval of desired application.)

APPLICATION INSTRUCTIONS

1. Thoroughly clean the substrate so it is free of all foreign materials such as bond breakers, curing agents, form release oils, dust, construction laitance, drywall residue etc. The surface should be dry before proceeding.
2. Use a low-pressure sprayer to apply Pentra-Sil® AC so as to saturate the surface.
3. Work the Pentra-Sil® AC into the surface using an automatic scrubber or stiff broom to enhance penetration. Allow the AC to dwell and penetrate 20-30 minutes. Keep the surface moist with Pentra-Sil® AC for 20 to 30 minutes (adding more product if necessary).
4. Remove all residual Pentra-Sil® AC with clear water. Let the surface dry.

CUSTOMER SERVICE:
(1-866-375-2280) to verify the most current versions or visit our website: www.convergentconcrete.com/product/products.html

Make certain the most current versions of Pentra-Sil® AC Product Data sheet and MSDS are being used; Please read this information prior to use; call Customer Service (1-866-375-2280) to verify the most current versions or visit our website: www.convergentconcrete.com/product/productAC.html

CLEAN UP

Use water to clean tools and equipment. Pentra-Sil® AC treatments are environmentally friendly and require no special or hazardous disposal methods.

AVAILABILITY

Treatments must be applied by an "Authorized Applicator" or Licensed Field Service Specialist. Pentra-Sil® (AC) concrete treatments are available from Factory Direct Concrete Floor Care Centers or direct "Authorized Applicators" from our plant and warehouse in Orem, Utah. For the name and telephone number of your nearest Pentra-Sil representative, call our customer service department listed on the back page.

COST

Pentra-Sil® AC treatments are competitively priced. Costs will vary from region to region. A Pentra-Sil representative can provide price information or assist in contacting the nearest Pentra-Sil stocking Concrete Floor Care Center.

TECHNICAL SERVICE

CUSTOMER CARE:
Toll Free 866-375-2280 or
801 375 2280

EMAIL:
technicalservice@convergentconcrete.com

WEB:
www.convergentconcrete.com

For medical emergencies only,
call Infotrac (800) 535-5053
Outside USA (352) 323-3500

TECHNICAL SERVICES

A staff of factory trained service personnel offers design assistance and technical support. For technical assistance, contact our Technical Service Department: Technical Service Customer Care Toll Free 866-375-2280 or 801 375 2280. Email: technicalservice@convergentconcrete.com or go to: www.convergentconcrete.com

FILING SYSTEMS

Architects' First Choice®
MANU-SPEC®
Sweet's®
Arcat®

HEALTH AND SAFETY PRECAUTIONS

Pentra-Sil® (AC) is an aqueous Lithium silicate solution that uses proprietary compounds. The treatment is alkaline and may cause eye and skin irritation.

KEEP OUT OF THE REACH OF CHILDREN. Do not take internally. Avoid prolonged contact with skin. Avoid ingestion of material. If swallowed, do not induce vomiting – call physician. Avoid contact with eyes. Protective clothing is recommended. Protective goggles are recommended in case of splashing. If splashed in eyes, wash immediately with clean water and call physician. Contact areas should be thoroughly washed with soap and water. Additional precautions, safety information and first aid treatments are contained in the Material Safety Data Sheet. Pentra-Sil will etch glass and painted surfaces. Immediately wash off with water all overspray from glass and painted surfaces. Caution: Surfaces wet with Pentra-Sil may result in a slippery surface.

FOR INDUSTRIAL USE ONLY

Not for sale to or resale to general public. For professional use only and must be applied by an authorized applicator or licensed field service specialist.

WARRANTY

LIMITED WARRANTY NOTICE Every reasonable effort is made to apply Convergent Concrete exacting standards both in the manufacture of our products and in the information that we issue concerning these products and their use. We warrant our products to be of good quality and will replace or, at our election, refund the purchase price of any products proved defective. Satisfactory results depend not only upon quality products, but also upon many factors beyond our control. Therefore, except for such replacement or refund, Convergent Concrete **MAKES NO WARRANTY OR GUARANTEE, EXPRESS OR IMPLIED, INCLUDING WARRANTIES OF FITNESS FOR A PARTICULAR PURPOSE OR MERCHANTABILITY, RESPECTING ITS PRODUCTS**, and Convergent Concrete shall have no other liability with respect thereto. Any claim regarding product defect must be received in writing within one (1) year from the date of shipment. No claim will be considered without such written notice or after the specified time interval. User shall determine the suitability of the products for the intended use and assume all risks and liability in connection therewith. Any authorized change in the printed recommendations concerning the use of our products must bear the signature of the Convergent Concrete Research Director. This information and all further technical advice are based on Convergent's present knowledge and experience. However, Convergent assumes no liability for providing such information and advice including the extent to which such information and advice may relate to existing third party intellectual property rights, especially patent rights. In particular, Convergent disclaims all **WARRANTIES, WHETHER EXPRESS OR IMPLIED, INCLUDING THE IMPLIED WARRANTIES OF FITNESS FOR A PARTICULAR PURPOSE OR MERCHANTABILITY. CONVERGENT CONCRETE SHALL NOT BE RESPONSIBLE FOR CONSEQUENTIAL, INDIRECT OR INCIDENTAL DAMAGES (INCLUDING LOSS OF PROFITS) OF ANY KIND.** Convergent Concrete reserves the right to make any changes according to technological progress or further developments. It is the customer's (Authorized Applicator) responsibility and obligation to carefully inspect and test any incoming goods. Performance of the product(s) described herein should be verified by testing and carried out only by qualified experts. It is the sole responsibility of the customer to carry out and arrange for any such testing. Reference to trade names used by other companies is neither a recommendation, nor an endorsement of any product and does not imply that similar products could not be used.

Other Pentra® Treatments

Pentra-Sil® (NL)

Concrete Chemical Hardener, Sealer, and Densifier

Pentra-Sil® (244+)

Salt Protection and Dust Proofer - Hardener, Sealer, Densifier

Pentra-Guard™ (HP)

High Performance Surface Hardener and Protective Clear Coat.

Pentra-Sil® (C&N)

Concrete Cleaner and Neutralizer

Pentra-Guard™ (EXT)

Exterior Surface Hardening and Protective Clear Coat.

Pentra™ Protective Coating

Industrial Topcoat Finish and Surface Hardener.

Pentra™ (MMC) Penetrating Sealer

Exterior Mold and Mildew Control

TRANSIL™

Traffic Marking and Safety Paint

For additional information on Pentra-Sil® (AC) Alkalinity Control Formula Primer or any of our other specialty Pentra™ treatments contact your local Specialty Chemical **"Concrete Floor Care Center"** or local dealer representative for an **"Authorized Applicator."**

Unique Strengths, Unmatched Performance.™

Convergent Concrete Specialty Chemical Concrete Treatments

450 South 1325 West
Orem, Utah 84058
United States of America
Office: 801-375-2280
Fax: 801-375-2971
www.convergentconcrete.com

FORM NO. AC-03360.111006-01/07

©2007 Convergent Concrete

Printed in U.S.A.

Printed on recycled paper including 10% post consumer fiber.

